



Main Road, Thetford, IP26 4RB

Rent - Guide Price £385,000

Deposit -

GUIDE PRICE £385,000-£415,000 A individual architecturally designed detached four bedroom bungalow enjoying a non estate position in this popular west Norfolk hamlet. The bungalow offers spacious and versatile accommodation including a lovely open plan kitchen/dining area with vaulted ceiling. Energy efficient features include an Air Source Heat Pump and Upvc double glazing. Viewings are recommended.

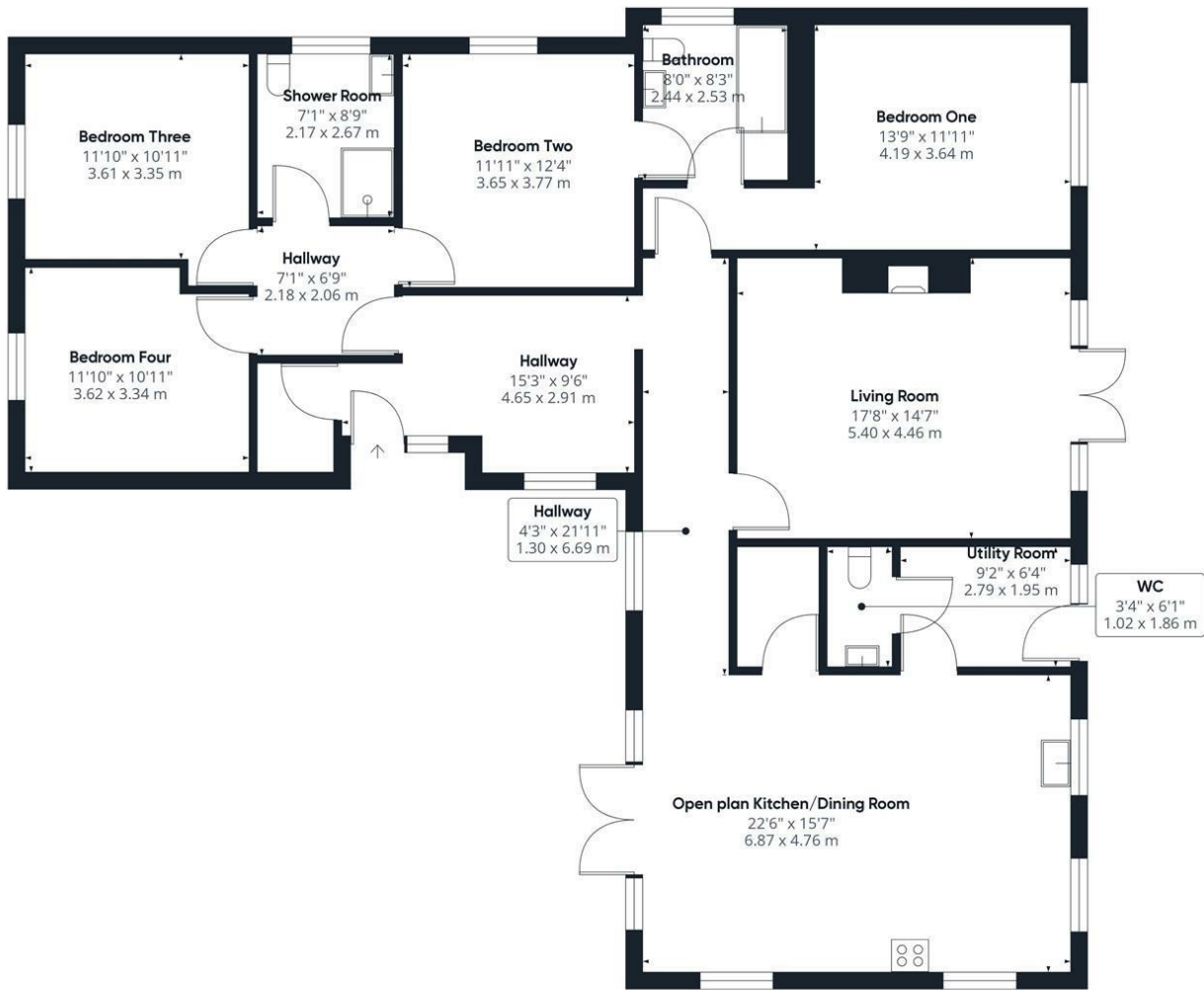
Agent's Note:

Please be aware that images of the property may have been digitally enhanced, edited, or staged using artificial intelligence, and may not reflect the current presentation or furnishings.

- ARCHITECTURALLY DESIGNED DETACHED BUNGALOW
- SPACIOUS & VERSATILE ACCOMMODATION
- SHOWER ROOM & CLOAKROOM
- LARGE OPEN PLAN KITCHEN/DINER WITH VAULTED CEILING
- AIR SOURCE HEATING & DOUBLE GLAZING
- BUILT BY THE OWNER/OCCUPYER IN 2022
- FOUR BEDROOMS PLUS JACK 'N' JILL EN SUITE
- SITTING ROOM WITH FIREPLACE
- UTILITY ROOM AND WALK-IN PANTRY
- GARDENS & SPACIOUS DRIVEWAY/PARKING AREA



Council Tax Band: E - EPC Rating: B 85



Approximate total area⁽¹⁾
1729.87 ft²
160.71 m²

(1) Excluding balconies and terraces

While every attempt has been made to ensure accuracy, all measurements are approximate, not to scale. This floor plan is for illustrative purposes only.

Calculations are based on RICS IPMS 3C standard.

GIRAFFE 360

